

Tug Assist Tool


TAT Easing the task of tug allocation

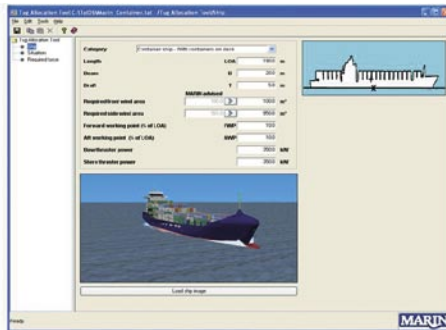
Noël Bovens

N.L.A.Bovens@marin.nl

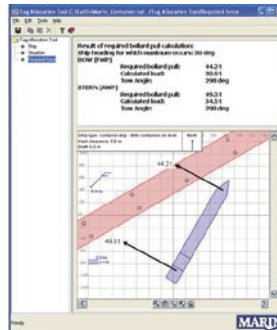
Questions about the total load and required tug capacity can soon be answered on a job-to-job basis with only a few clicks of the mouse by the Tug Assist Tool - TAT.

TAT allows you to calculate the wind and current load for a given vessel and a given wind and current. Based on the calculated load, the required amount of bollard pull forward and aft are also provided. Potential users are harbour masters, operations managers, terminal operators and tug fleet managers.

Together with the PLA, ABP, MMA & Tug Malta, MARIN started the development of TAT, which runs on any standard PC. A library with various example vessels will be part of the package and users may add other vessels that frequently visit the port. The launch of TAT version 1.0 is expected mid-2006. 



GUI Input (draft)



GUI Result (draft)